

Unlock the power of video in your operations.



What is the impact of not having video effectively incorporated into your operations?

- You're unable to isolate and capture video of all of the specific events or conditions that are of interest to your business.
- You're unable to respond to service verification requests because it's too time-consuming and labor-intensive.
- You have no way of confirming if or why a driver was unable to complete a scheduled service.
- You're unable to find video that isn't associated with an event because you don't have time to manually locate the exact timestamp.
- You have no way of knowing whether your cameras need service, even though you rely on them.
- You don't have time to administer a video program.



We have been working with Tourmo for three years and with their AI platform, we have been able to win 70% of the business of the world's largest package delivery company. Tourmo has drastically reduced the number of false positives and the need for manual video review which allowed us to offer a better value – quality and price – to our end customer.



– A Tourmo user testimonial from
CEO, Large Video Telematics
Provider – North America



Automated Video Operations Workflows

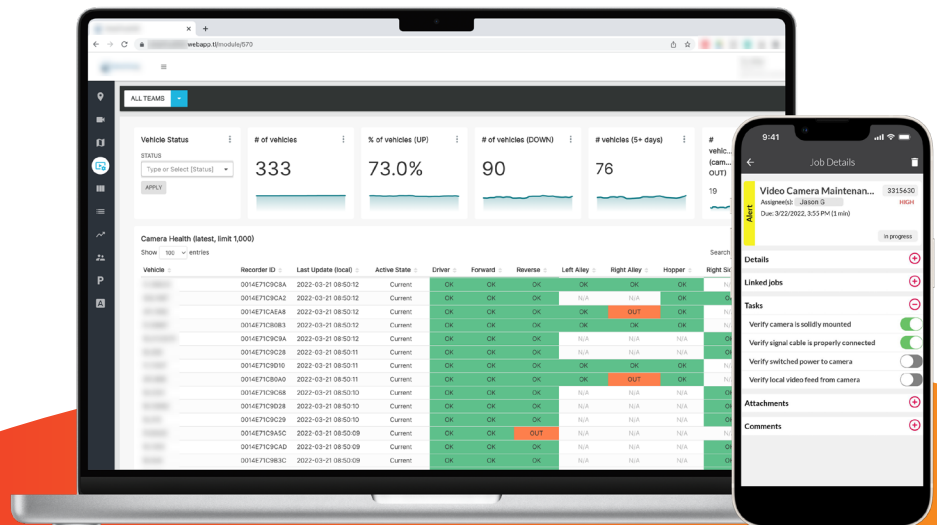
- **Higher Returns:** Up to 30% increase in ROI from existing video deployments.
- **Increased Effectiveness:** Up to 90% reduction in false positives.
- **Improved Performance:** Up to 10% increase in camera uptime and safety results. Up to 20% reduction in camera service tech calls.
- **Lower cost:** Up to 15% reduction in manual overhead.

Unlock the full potential of video in your operations.

Our automated Video Operations workflows help you fully incorporate video into your operations. You'll have full visibility into video-enabled workflows specific to your business, plus quick and easy access to all video, and the ability to share it with customers and third parties to protect your drivers, your equipment, and your bottom line.

Features

- **Enhance Existing Cameras:** Camera systems can be expensive when you factor in the hardware, installation, and vehicle downtime. Instead of replacing them, we can work with your existing cameras to extend the capabilities so you get the most out of your investment.
- **Flexible Automated Workflows:** Integrating video into your operations doesn't have to be difficult. The key is automated workflows that are configurable for how you want to work. Route video enhanced tasks or tasks triggered from video to the right people to take action, and track that action is actually taken. Embed your desired business logic into the workflows. This goes way beyond simple alerts while being easier for your organization to use.
- **Countless Video Triggers:** We enable you to add virtually any data source as a trigger to retrieve video segments and feed them into automated workflows so they don't overwhelm your managers. This powerful capability lets you incorporate video in ways that are unique to your operations.
- **Flexible Reporting and Rich Analytics:** The Tourmaline Labs platform includes a fully integrated business intelligence suite so you can track your organization's progress toward its goals. Dashboards with your key metrics are available at any time, or you can receive an alert when conditions occur or something isn't trending the way you want it to.



For more information, visit www.tourmo.ai

