

Increase fuel efficiency, minimize fuel theft, and reduce your fleet's carbon footprint.

What is a lack of visibility into fuel efficiency and CO₂ emissions costing your company and the environment?

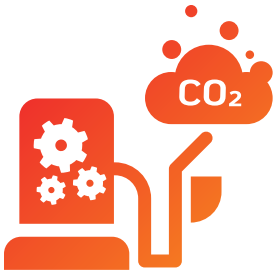
- You're paying more for fuel but don't know how to reduce your usage.
- You're not sure how to identify or prevent potential fuel theft.
- You have no way of knowing how your fleet is performing compared to others.
- You're unable to accurately report to the government on your fleet's CO₂ footprint.
- You're worried leadership won't think you're managing well.
- You don't have time to run a fuel efficiency improvement program.

“

We had four people working on fuel data analysis at any given time, spending hours every week gathering and analyzing data from different sources, and we were still losing about \$300,000 annually to fuel theft. Our Company has been looking for a solution like Tourmo's for over two years to significantly reduce fuel theft.

”

– A Tourmo user testimonial from a Logistics Manager, Food Distribution industry



Automated Fuels & CO2 Workflows

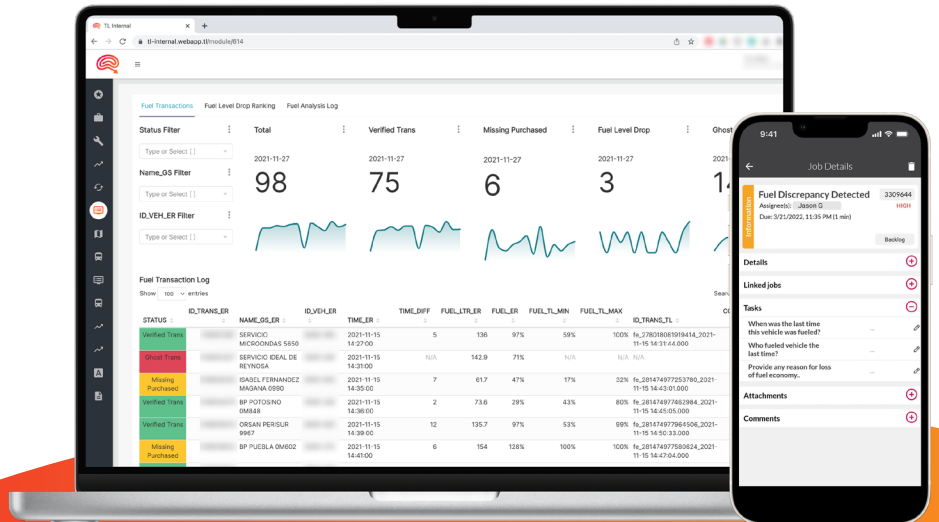
- **Increase efficiency:** Up to 20% improvement in fuel efficiency.
- **Prevent loss:** Eliminate fuel theft.
- **Reduce manual efforts:** Automatically reconcile fuel transaction data.
- **Improve productivity:** Up to 40% reduction in effort on environmental reporting.
- **Lower cost:** Substantial reduction in fuel cost.

Increase fuel efficiency, minimize fuel theft, and reduce your fleet's carbon footprint.

With automated Fuel & CO₂ workflows, your drivers can learn to use less fuel and you can automatically reconcile fuel transactions while identifying potential fuel theft. Gamification and rewards motivate and encourage driver participation. With the data you receive, you can monitor your fleet's fuel efficiency, performance, and environmental impact.

Features

- **Fuel Theft Analysis:** We will reconcile your fuel transactions and uncover suspicious activity – THE WORLD'S MOST ADVANCED FUEL THEFT ANALYSIS.
- **Greenhouse Gas Reporting:** Automatically prepare regulatory reporting about your fleet's carbon footprint.
- **Contextualized Inefficient Driving Analysis:** Context-aware driving behavior analytics. We'll help you process mobility data from any smartphone, tablet, or existing telematics device to produce deep insight into driving behaviors – no matter what you are driving or where. Combine it with a purposeful scoring system and positive reinforcement driver coaching that enable you to proactively increase fuel efficiency while minimizing supervisor involvement.
- **Fuel & CO₂ Workflow Management:** AI-powered business process management that delivers automation, task management, insights, and transparency across organizations to expose the value from your data and integrate it into your workflows.



For more information, visit www.tourmo.ai

